

Replacement kits MA xxxx

Functional units composed of all corresponding individual parts required

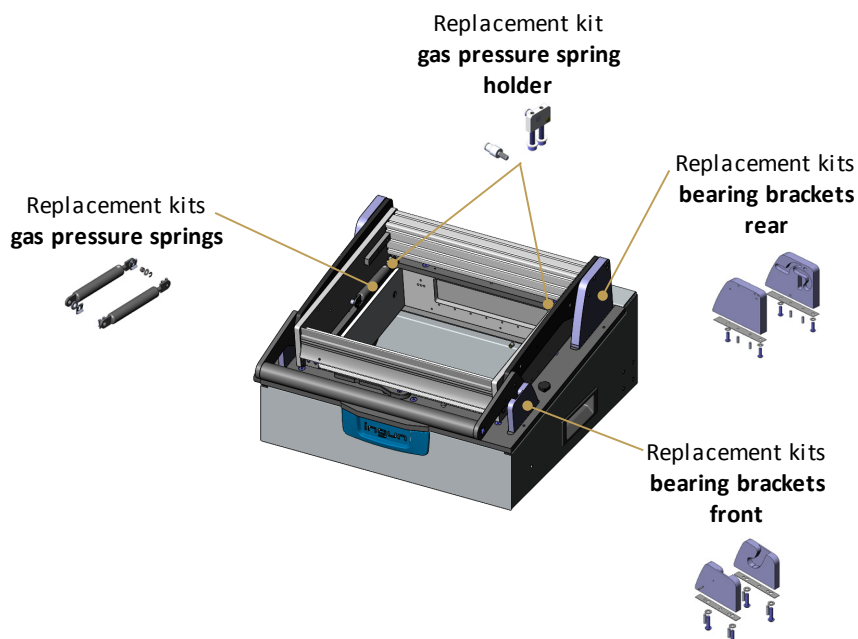
Thanks to the sophisticated design of the new **MA xxxx replacement kits**, you not only save time when replacing worn out functional units, but the kits also include all the compatible individual parts required. This enables you to maintain test fixtures quickly and reliably without any trouble.

Features:

- Quick, reliable and trouble-free maintenance
- Ordering and storage of individual parts not necessary
- Corresponding individual parts of various functional units included
- Available as kit, including drawing for safe assembly
- Highest quality standard

The following replacement kits are available for manual test fixtures of the **MA xxxx series**:

- Replacement kits **bearing brackets front**
- Replacement kits **bearing brackets rear**
- Replacement kits **gas pressure springs**
- Replacement kit **gas pressure spring holder**



Replacement kits MA xxxx

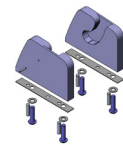
Functional units composed of all corresponding individual parts required

Ordering information:

Replacement kits **BEARING BRACKETS FRONT:**

The replacement kits contain all parts necessary for replacement of the front bearing brackets.

Description	Suitable for test fixtures	Part no.
ETK bearing brackets V MA2xxx	MA 2xxx	41190
ETK bearing brackets V MA3xxx	MA 3xxx	54753

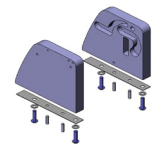


Part no. 41190

Replacement kits **BEARING BRACKETS REAR:**

The replacement kits contain all parts necessary for replacement of the rear bearing brackets.

Description	Suitable for test fixtures	Part no.
ETK bearing brackets H MA2x09/11/12	MA 2x09, MA 2x11 and MA 2x12	54767
ETK bearing brackets H MA2x13/14	MA 2x13 and MA 2x14	54768
ETK bearing brackets H MA3xxx	MA 3xxx	54769



Part no. 54767

Replacement kits **GAS PRESSURE SPRINGS:**

The replacement kits contain all parts necessary for replacement of the gas pressure springs.

Description	Suitable for test fixtures	Part no.
ETK FB-GDF-KIT-150N-MAxxxx	MA xxxx with 150 N	41150
ETK FB-GDF-KIT-200N-MAxxxx	MA xxxx with 200 N	39200
ETK FB-GDF-KIT-300N-MAxxxx	MA xxxx with 300 N	39300
ETK FB-GDF-KIT-400N-MAxxxx	MA xxxx with 400 N	39400
ETK FB-GDF-KIT-500N-MAxxxx	MA xxxx with 500 N	39500



Part no. 41150

Replacement kits MA xxxx

Functional units composed of all corresponding individual parts required

Ordering information:

Replacement kit **GAS PRESSURE SPRING HOLDER:**

The replacement kit contains all parts necessary for replacement of the left respectively right gas pressure spring holder.

Description	Suitable for test fixtures	Part no.
ETK GDF-Holder MAxxxx	MA xxxx	54791



Please contact us for further information.
 Prices and delivery time on request.
 Technical changes possible without prior notification.

Further innovative products can be found on our homepage and in our catalogue. Don't miss our extensive assortment of test fixture accessories.

