

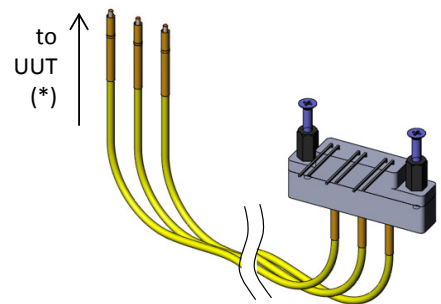
## LED Detection

### Testing of ON- / OFF status of up to three LEDs simultaneously

With the **LED detector** the status of up to three LEDs can be tested simultaneously.

The LED detector consists of three phototransistors to test LEDs in the wavelength range from 420 nm to 1130 nm, three fibre optic cables each approximately 30 cm long, and three receptacles for customised assembly on the UUT.

The space-saving assembly of the LED detector can be done from the bottom side as well as the top side in the test fixture. The circuit of the phototransistors has to be done by customers themselves.



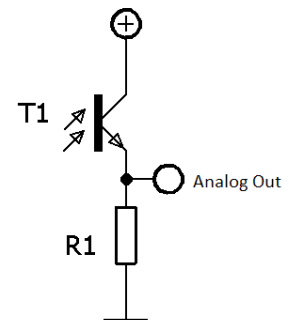
Part no. **54789**  
LED detector

#### Features:

- Reliable testing of ON/OFF status of up to 3 LEDs simultaneously
- Precise testing in the wavelength range from 420 nm to 1130 nm
- Easy, space-saving assembly
- Delivery includes three fibre optic cables and three receptacles for customised assembly on the UUT

#### Technical information:

- Outer dimensions:	50 x 30 x min. 63 mm (W x D x H)
- Wavelength range:	420 nm to 1130 nm
- Fibre optic cable length:	approx. 30 cm
- Fibre optic cable bend. radius:	min. 25 mm
- KS mounting hole:	Ø 2.75 mm
- Phototransistor wattage:	200 mW
- Current $I_{PCE}$ :	> 0.08 mA
- Voltage $V_{CE}$ :	max. 50 V



Recommended circuit set-up

#### Ordering information:

- <b>FB-ABF-L-OA-K3 LED detector:</b>	Part no.: <b>54789</b>
<u>Scope of delivery:</u>	
LED detector with 3x fibre optic cables and 3x receptacles	

\*: Insulation length is dependent on UUT

Please contact us for further information.  
 Prices and delivery time on request.  
 Technical changes possible without prior notification.

Further innovative products can be found on our homepage and in our catalogue. Don't miss our manual test fixture series MA xxx and MA xxxx.

